

INSTALLATION GUIDE



HYDRA RINSE®
CLEANS SIMPLE. SAFE. QUICK.

TABLE OF CONTENTS

Job Scope.....	3
Spec Sheet.....	4
Recommended Parts and Tools List.....	5
Water Source Piping.....	6-8
Near Machine Piping.....	9-11
Drainage.....	12

JOB SCOPE

The Hydra Rinse system needs access to a water source

- Temp: 110 – 120 F
- Pressure – 50 PSI
- Flow – 3.5 – 4 gallons per minute
- Location – Preferably within 5' of the machine on the right side. (Otherwise you need a garden hose extension)
- 2 – ¾" male garden hose thread connections as shown in Fig 1 or Fig 2 (refer to pgs. 7-9 for more detail) – **The Pro-Control and Portable Wand water supplies connect to water by use of female garden hose thread connections.**



Fig 1



Fig 2

Typical ways to connect to a water source (more details provided pgs. 4-6)



Refer to pg. 5 for more detail



Refer to pg. 6 for more detail

The Hydra Rinse system needs access to a drain *(refer to PG. 10 for more detail)*

When an adequate drain is not easily accessible near the machine, we recommend installing drainage piping from a drain to a more accessible location relative to the machine. This keeps the drain hose as short as possible. 1 ¼" or 1 ½" PVC/ABS is often used to achieve this.

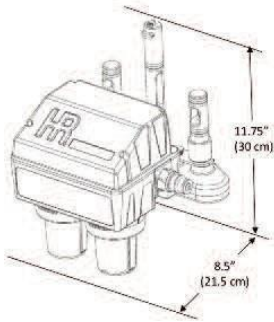


Pro-control

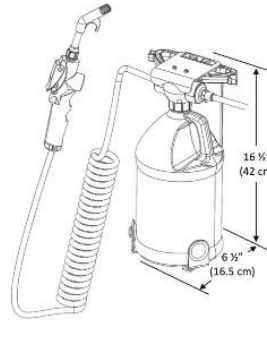
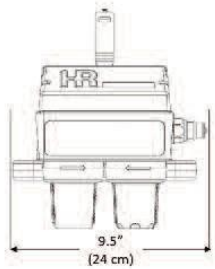


Portable Wandstation

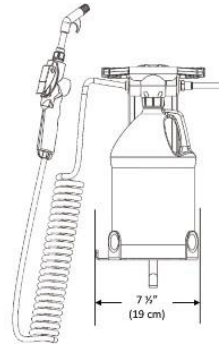
Size and Weight



3.6 lbs (1.63 kg)



10 lbs (4.54 kg)



Water Supply Temperature¹



110°F - 120°F (44°C - 49°C)

Minimum Supply Pressure (Static)



40 PSI (275 kPa)



50 PSI (345 kPa)

Minimum Supply Flow Rate²

4.0 US Gal/min (15 L/min)

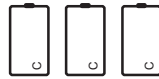
1.0 US Gal/min (3.85 L/min)

Dispense Flow Rate

0.5 - 4.0 US Gal/min (1.89 - 15 L/min)

0.25 US Gal/min (0.95 L/min)

Power



3 C-Type Alkaline Batteries

N/A

Handling

Splash and Dust Resistant

Storage/Mounting

Dry storage shelf (Approx. 1.5 sqft)
Store between 60° - 110°F (15.5° - 43°C)

Wall Mounted
2 - #8 Screws w/ anchors
Store between 60° - 110°F (15.5° - 43°C)

In the Box

- Pro-control
- Drain Extension
- Model Specific Manifold Assembly
- Model Specific Bypass System
- Hose Splitter
- Documentation

- Portable Wandstation
- 30' Coiled Hose with Spray Handle
- 25' Supply Hose
- Mounting Bracket
- Mounting Latch
- LEXX Test Strips (ph)
- Documentation

1.A Hot Water Temperature Control Valve is recommended to be installed to provide tempered water to Hydra Rinse supply piping along with a backflow prevention device in accordance with local, state and federal guidelines.

2. Minimum Flow Rate for combined use of both Hydra Rinse Delivery Devices is 4 GPM

* Refer to Operator's Manual for more information

** Specification(s) subject to change without notice, final product specifications may vary slightly.

RECOMMENDED PARTS & TOOLS LIST

SINGLE MACHINE DUAL CHECK INSTALL KIT

HR-KT-0220 Available at Hydrarinse.com

	QTY
• 3/4" SHARKBITE® MIXING VALVE 24505	1
• 3/4" SHARKBITE® DUAL CHECK VALVE BF13434SB	1
• 3/4" SHARKBITE® TEE U370LF	2
• 1/2" X 1/2" X 3/4" PUSHFIT TEE, OMNIGRIP PF-T334-LF	2
• 3/4" PEX 90 PXE075	10
• 3/4" PEX TEE PXT075	1
• 3/4" PEX BALL VALVE VPP034-LF	2
• 3/4" PEX X MPT BALL VALVE BV034MX-LF	2
• 3/4" FPT X MGHT ADAPTER 937-6930101	2
• 3/4" PEX CINCH RINGS PER BAG OF 50 PXCL075	1
• 3/4" VAN HANGER 129CT0075	10
• 3' FLEXZILLA® LEAD-IN HOSE HFZG503YW	1
• UTILITY SPRING CLIP 568117	1
• UTILITY HOOK 233963	1
• MACHINE INSTALL GUIDE	1

HR-KT-0272 SINGLE MACHINE ATMOSPHERIC VENTED

INSTALL KIT substitutes an atmospheric vented backflow preventer in place of the dual check valve.

DUAL CHECK INSTALL KIT

HR-KT-0123 Available at Hydrarinse.com

	QTY
• 3/4" SHARKBITE® MIXING VALVE 24505	1
• 3/4" SHARKBITE® DUAL CHECK VALVE BF13434SB	1
• 3/4" SHARKBITE® TEE U370LF	2
• 1/2" X 1/2" X 3/4" PUSHFIT TEE, OMNIGRIP PF-T334-LF	2
• 3/4" PEX 90 PXE075	10
• 3/4" PEX TEE PXT075	2
• 3/4" PEX BALL VALVE VPP034-LF	2
• 3/4" PEX X MPT BALL VALVE BV034MX-LF	3
• 3/4" FPT X MGHT ADAPTER 937-6930101	3
• 3/4" PEX CINCH RINGS PER BAG OF 50 PXCL075	1
• 3/4" VAN HANGER 129CT0075	10
• 3' FLEXZILLA® LEAD-IN HOSE HFZG503YW	2
• UTILITY SPRING CLIP 568117	2
• UTILITY HOOK 233963	1
• HYDRA RINSE 5' WATER SUPPLY	1
• MACHINE INSTALL GUIDE	1

HR-KT-0124 ATMOSPHERIC VENTED INSTALL KIT

substitutes an atmospheric vented backflow preventer in place of the dual check valve.

Locally Sourced Materials

- 3/4" PEX Tubing
- 1.25" or 1.5" PVC/ABS Pipe and fittings as needed for drain piping
- Anchors and screws as needed

Recommended Tools:

- Cordless Drill
- Drill bits for anchors being used
- Tape Measure
- PVC/PEX Cutter
- Copper Tubing Cutter
- PEX Cinch Ring Crimping Tool
- 12" Level
- #1 Phillips Screwdriver
- #2 Phillips Screwdriver
- 10" Channel Locks x2
- Flashlight/Headlight
- 3/4" Sharkbite® removal tool
- 3/4" Sharkbite® Depth Gauge
- Sharpie/Pencil
- Utility Knife

WATER SOURCE PIPING UTILITY ROOM

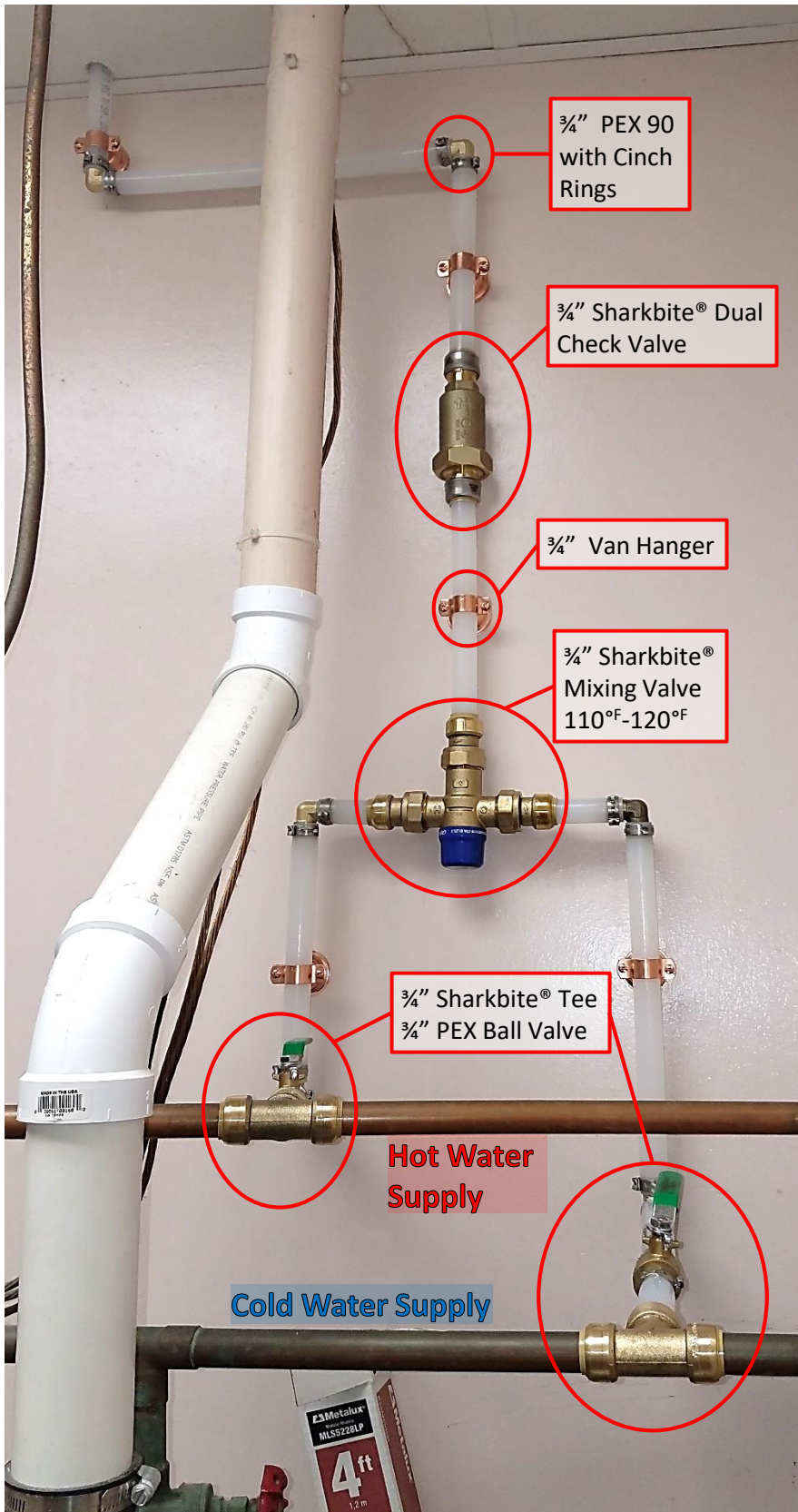


Figure 1 shows the components from Hydra Rinse **HR-KT-0220/HR-KT-0123** being used to install a dedicated mixed water line that can be run up above the ceiling and over to where the machine is located. **(PEX piping is not included in kit. Other components may be necessary in your specific application).** If your hot water supply is already at the required 110°F-120°F, a mixing valve is not required.

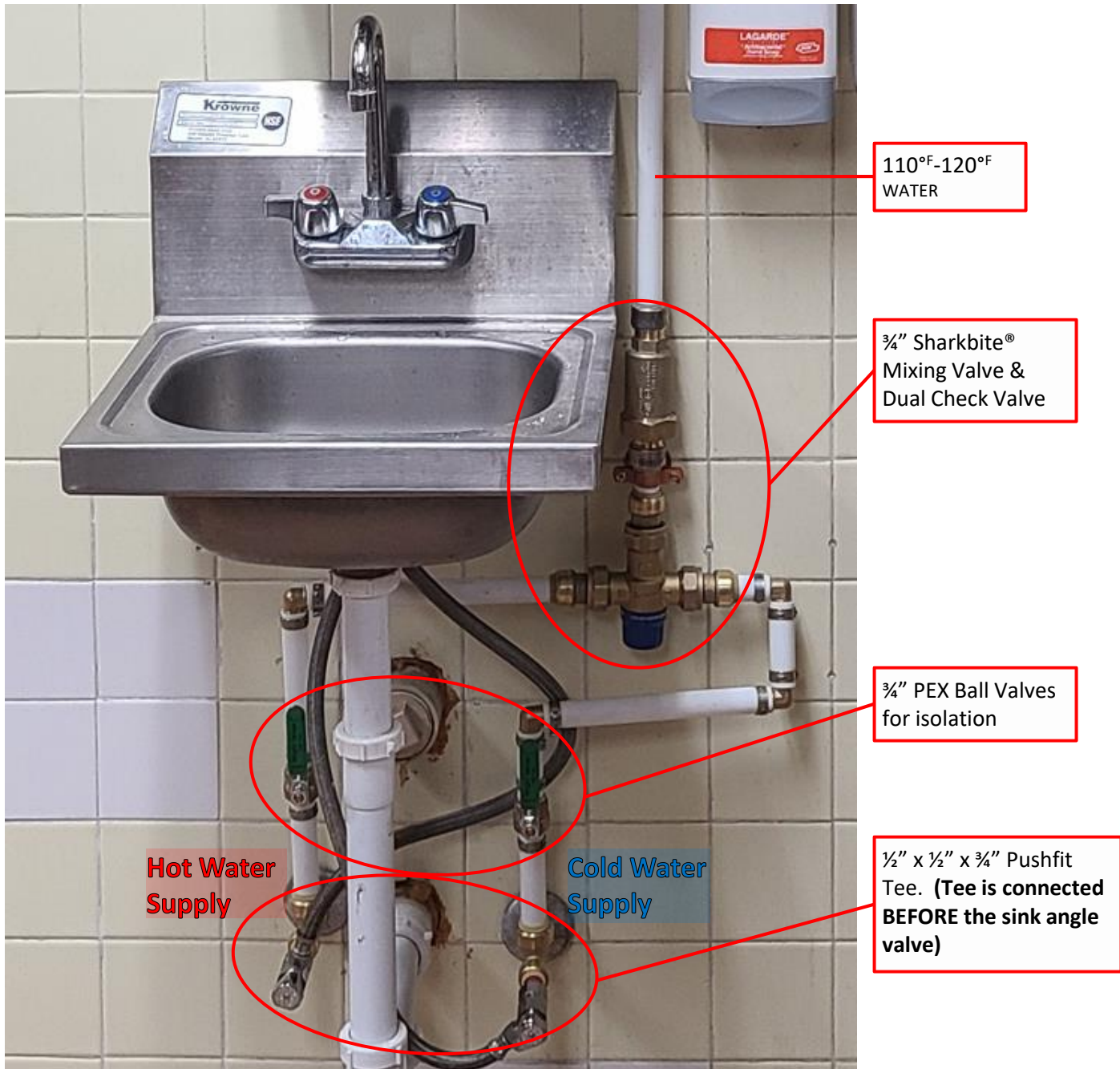
Hydra Rinse recommends the use of a Dual Check Valve. Consult your local plumbing code requirements. **(California requires the use of a Watts 9D backflow preventer with atmospheric vent or equivalent).** An Atmospheric Vented Backflow Preventer is included in HR-KT-0124/HR-KT-0272 in place of the Dual Check Valve.

INSTALLATION INSTRUCTIONS

1. Shut off water supply
2. Drain piping via nearby faucet
3. Install Sharkbite® tee and PEX ball valves on both hot and cold water supply piping and close ball valves.
4. Restore water supply
5. Finish installing mixing valve and dual check valve or backflow preventer.
6. Pipe mixed water line to desired location(s).

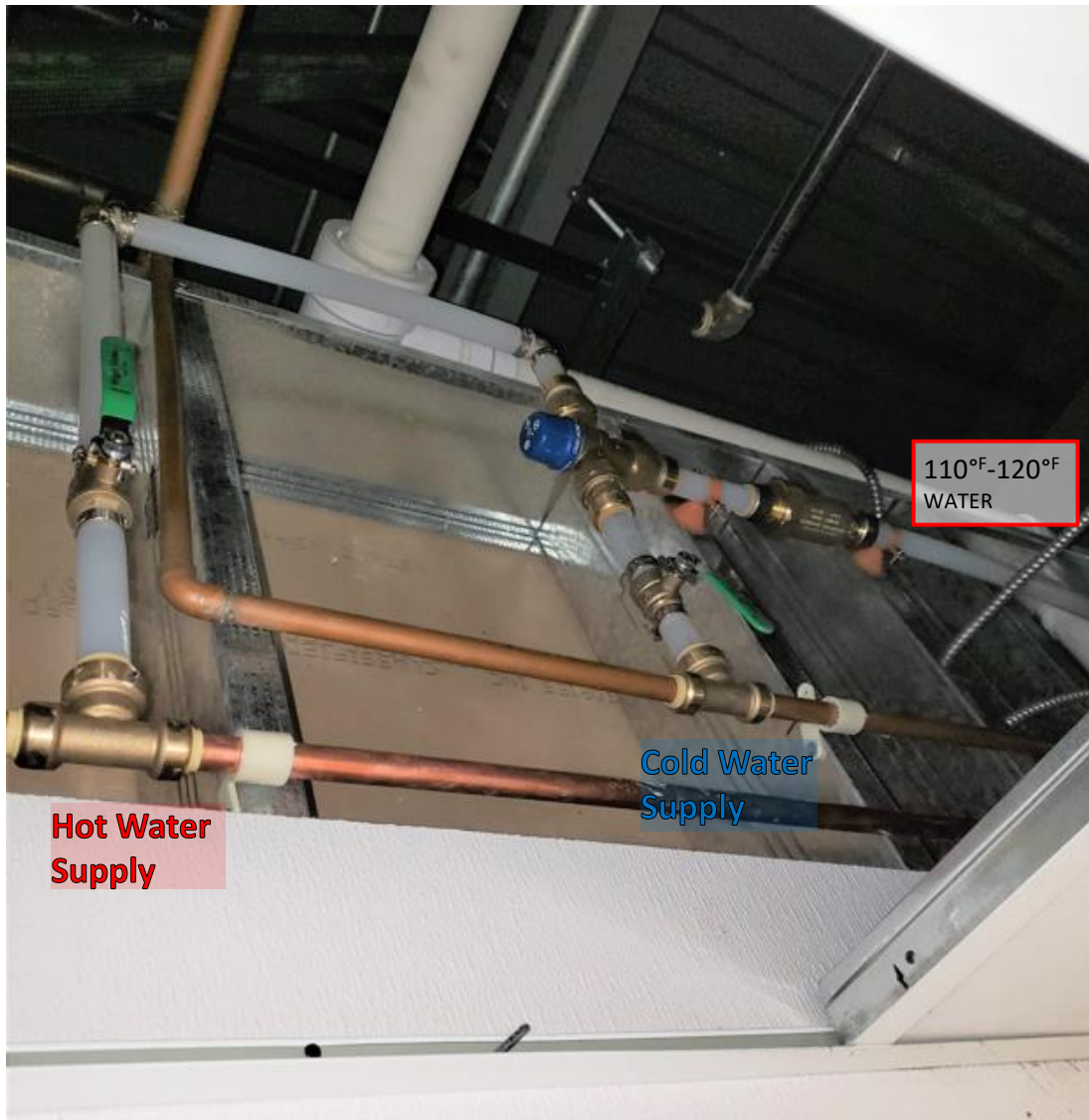
Figure 1

WATER SOURCE PIPING UNDER SINK



It is often advantageous to cut into the hot and cold water supply under a nearby hand sink when available. It is important to cut into the hot and cold water lines BEFORE the angle valves in order to provide a minimum flow of 3.5gpm to the Pro-Control.

WATER SOURCE PIPING ABOVE CEILING



Very often, hot and cold water can be found above the drop ceiling near the machine to be cleaned. The water is then piped with PEX over to the machine and then straight down the wall.

NEAR MACHINE PIPING

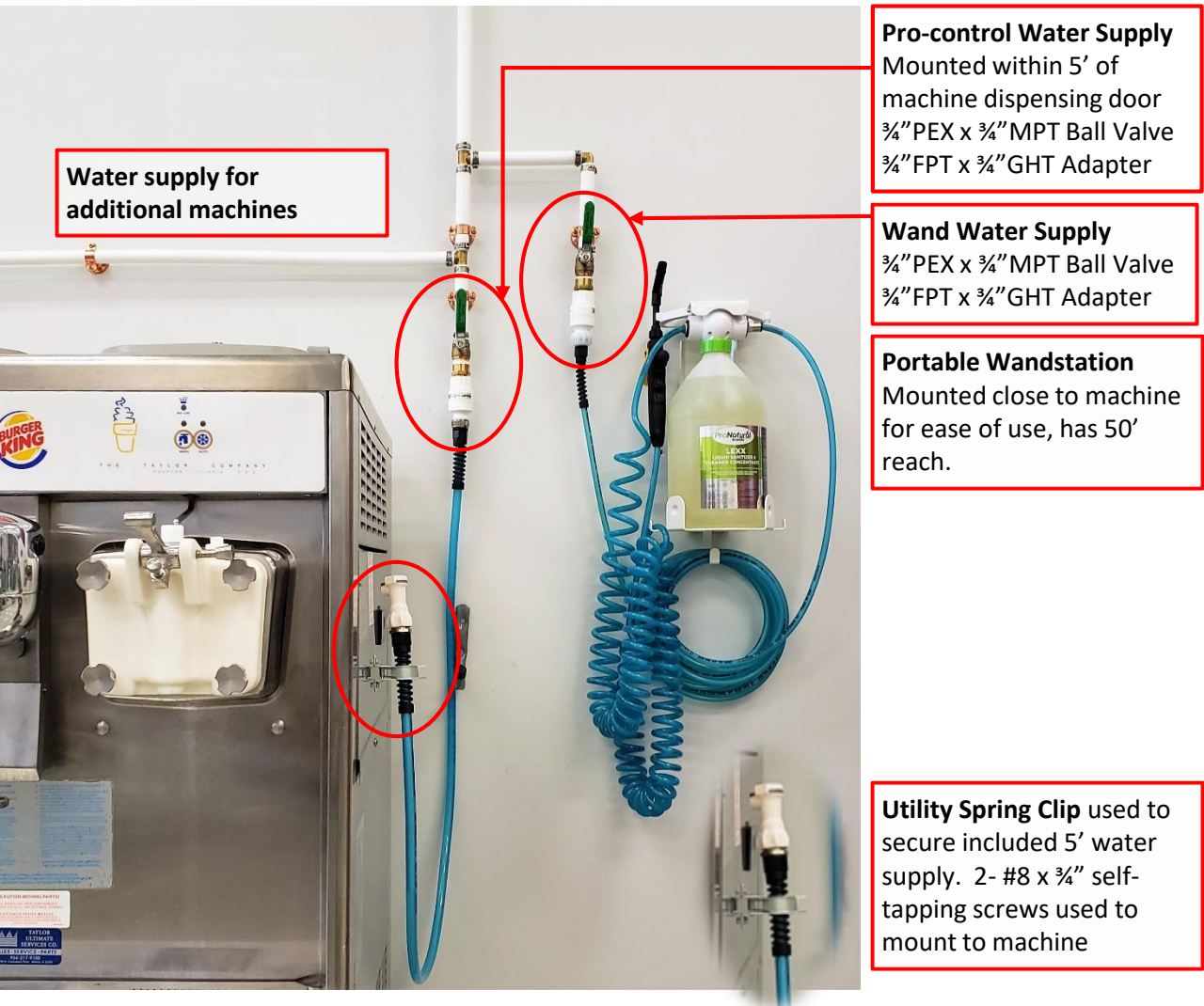


Figure 2

Figure 2 shows the most optimal setup for ease of use utilizing the components contained within Hydra Rinse **HR-KT-0220**. If you have more than one machine, the **HR-KT-0123 Dual Check Install Kit** comes with one extra 5' water supply connection and other extra fittings that will allow you to create another water supply drop.

- Both the Pro-control and Portable Wandstation ball valves are within reach of the user.
- The Portable Wandstation is mounted within reach of the machine.
- The Utility Spring Clip is being used to secure the Pro-control water supply in a convenient location for the user. **(Anchors and self-tapping screws are not included with kit. Be sure no damage will result from installing screws into a machine).**

NEAR MACHINE PIPING

Wand Water Supply

$\frac{3}{4}$ " PEX x $\frac{3}{4}$ " MPT Ball Valve
 $\frac{3}{4}$ " FPT x $\frac{3}{4}$ " GHT Adapter

Pro-control Water Supply

Mounted within 5' of
machine dispensing door
 $\frac{3}{4}$ " PEX x $\frac{3}{4}$ " MPT Ball Valve
 $\frac{3}{4}$ " FPT x $\frac{3}{4}$ " GHT Adapter

Portable Wandstation

Mounted close to machine
for ease of use

Utility Spring Clip used to

secure included 5' water
supply. 2- #8 x $\frac{3}{4}$ " self-
tapping screws used to
mount to machine

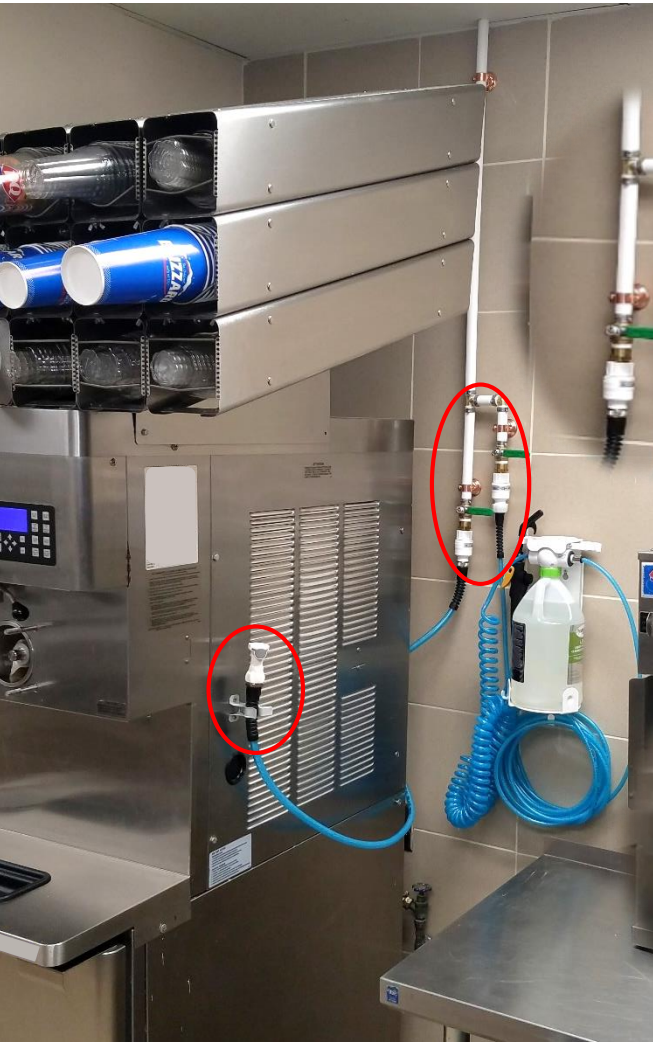


Figure 2

Figure 2 shows the most optimal setup for ease of use utilizing the components contained within Hydra Rinse **HR-KT-0220**. If you have more than one machine, the **HR-KT-0123 Dual Check Install Kit** comes with one extra 5' water supply connection and other extra fittings that will allow you to create another water supply drop.

- Both the Pro-control and Portable Wandstation ball valves are within reach of the user.
- The Portable Wandstation is mounted within reach of the machine.
- The Utility Spring Clip is being used to secure the Pro-control water supply in a convenient location for the user. *(Anchors and self-tapping screws are not included with kit. Be sure no damage will result from installing screws into a machine).*

NEAR MACHINE PIPING



An optional Brass GHT splitter is included with every Pro-control and can be utilized to supply water for both the Pro-control and the Portable Wandstation.



Figure 3



Figure 4

1 - 3' Flexzilla® Lead-in hose is included in the Hydra Rinse HR-KT-0220/0272 and 2 with HR-KT-0123/0124. This hose can be utilized to extend the 5' Pro-Control water supply. This hose is drinking water safe, flexible, and will not restrict the flow of water. Note figures 3 and 4 for proper connection.

DRAINAGE



1 ½" PVC was utilized to make use of this floor sink for when the machine will be covering it.



An optional hose holder hook is included in the Hydra Rinse HR-KT-0123, 0124, 0220, 0272 that can be used to hang the drain hose.



A slip joint tee fitting was utilized to tap into an existing drain rather than trying to hold the drain hose into the sink.