

# Shake Machine Series: Stage 1 Cleaning Process

Words in **GREEN** signifies "ON"  
Words in **RED** signifies "OFF"

## 1 Drain Product



- Remove top hopper lid(s)
- Remove feed tube(s)
- **Wash Mode**
- Drain product
- **Off**
- Refrigerate or discard

## 5 Install Pro-control Module



- Clean bottom of freezer door
- Wet all O-rings
- Install Pro-control
- Engage keeper switch
- Connect water supply

## 9 Clean Freezer Door & Re-install Draw Valve(s)



- Clean bottom of freezer door & draw valve port(s)
- Leave apart or re-install the draw valve(s) & re-fill the machine within 72 hours
- Perform self-clean on Pro-control

## 2 Clean Hopper(s)



- Clean top hopper(s) & lid(s)
- Brush mix inlet hole(s)
- Fill freezer barrel(s) with wand
- **Wash Mode**
- wait 2-3 minutes

## 6 Install LEXX™ Cups



- Install 1 LEXX™ cup into each cup housing

## 3 Drain Pre-wash & Remove Draw Valve(s)



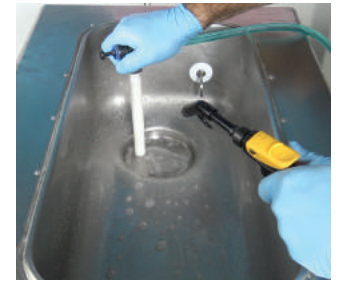
- Drain pre-wash
- **Off**
- Remove draw valve(s)

## 7 Start the Pro-control



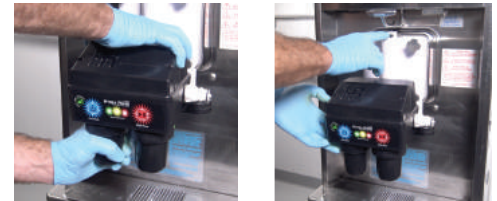
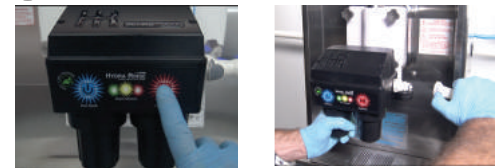
- **"ONE TOUCH"** to initialize the Pro-control cycle
- Audible beeps from Pro-control
- **Wash Mode**
- Clean any removed components
- **If performing Stage 2, flip to back**

## 4 Install Bypass System



- Spray off bypass tube(s)
- Insert into mix inlet hole(s)
- Terminate bypass hose to a suitable drain
- Replace hopper lid(s)

## 8 Pro-control Cycle Complete



- "GREEN LED" blinks, cycle is done
- **Off**
- Press & release **"PLAY/PAUSE"**
- Disconnect water supply
- Remove left cup housing over bucket
- Remove bypass to drain solution (momentarily **Wash Mode** )
- Re-attach cup housing
- Disengage keeper switch & remove the Pro-control

Keep track of your cleaning schedule:

Sunday	Monday	Tuesday	Wednesday	Thursday	Friday	Saturday

Words in **GREEN** signifies "ON"  
Words in **RED** signifies "OFF"



- "Reset-Cups-Program"**
  - Reset
  - Register Cleaning Cycles
  - Read # of Cleanings Available
- "ONE TOUCH"**
  - Initialize Cleaning Cycles
  - Conclude Cleaning Cycles
  - Self-Clean Mode when used
  - Simultaneously w/ "PLAY/PAUSE"
- "Status Indicators" LEDs**
  - Power On/Cycle Initiated
  - Cycle Paused
  - Errors
  - # of Registered Cleanings
- "PLAY/PAUSE"**
  - Cancel Cleaning
  - Pause/Resume Cleaning
  - Self-Clean Mode when used
  - Simultaneously with "ONE TOUCH"

\*Refer to the Manual for Full Instructions\*

## Shake Machine Series: Stage 2 Cleaning Process

Words in **GREEN** signifies "ON"  
Words in **RED** signifies "OFF"

### 1 Pause the Pro-control



- All 3 LED's start blinking about 3 1/2 minutes into the cycle
- "PLAY/PAUSE"
- **off** ○

### 5 Re-assemble Machine



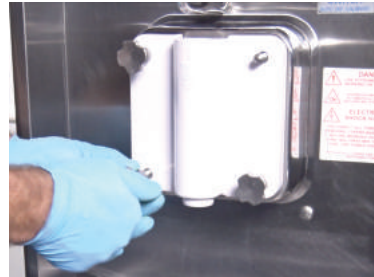
- Re-install rear shaft seal
- Apply lube to smooth part of drive shaft, avoiding hex end
- Re-install remaining components

### 2 Drain Pro-control



- Disconnect water supply
- Remove left cup housing
- Remove bypass tube to drain

### 6 Re-install Pro-control



- Re-install the Pro-Control & connect the water supply
- Check that the water is still turned on & the bypass is properly installed

### 3 Remove Pro-control



- Re-install the left cup housing
- Remove the Pro-Control & set aside (do not push any additional buttons)
- Pro-Control will beep & green LED will blink while paused

### 7 Resume Stage 1 Cleaning



- "PLAY/PAUSE"
- **Wash Mode** 🔄
- The Pro-Control will now start its sanitizing cycle
- **Revert to Step 8 to complete stage 1**

### 4 Remove & Clean Internal Components



- Remove the front door & all internal components
- Clean removed components using the wand, wipes and brushes
- Brush clean all door openings