

**HYDRA RINSE<sup>®</sup>**

**Quick Start Guide**

**Taylor 632 & 707**

# Quick Start Guide

- Complete Pre-Installation Plumbing
- Install Portable Wandstation
- Assemble Pro-Control
- Upgrade Ice Cream Machine
- Watch Training Videos
- Post-Training Job Aids
- Register Warranty

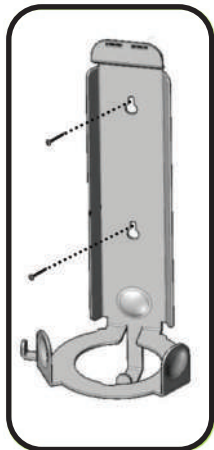
Taylor 632

Taylor 707

Generic

# Install Portable Wandstation

## Mount Wand Bracket



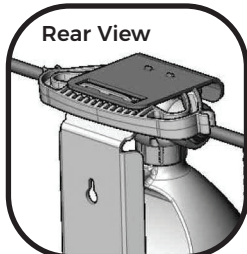
## Install LEXX Gallon



## Secure Assembly to Bracket



## Rear View



## Connect Water Supply



You'll Need:

HRWAND128



HRLEXX\*G

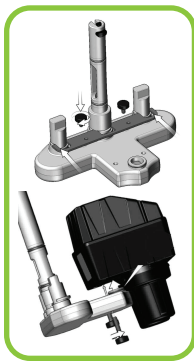


# Assemble Pro-Control

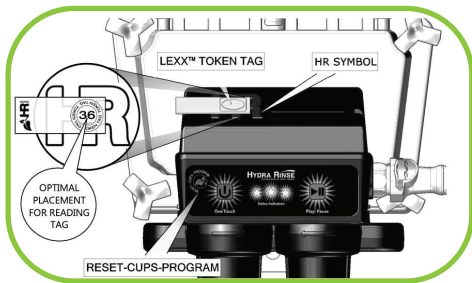
Attach Pistons and Manifold to Pro-Control Module; Refer to **Manifold Assembly Insert**



Install Batteries by Removing Top Cover



Register Token Tag;  
Refer to **Token Tag Insert**



You'll Need:

TAYHRPC632

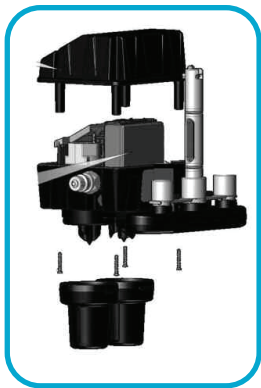


HRLEXXCUPS72

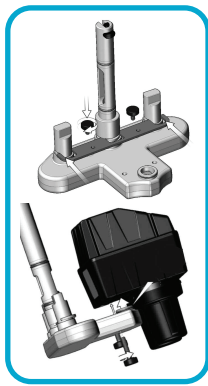


# Assemble Pro-Control

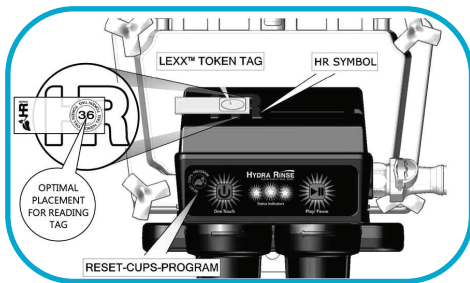
Attach Pistons and Manifold to Pro-Control Module; Refer to **Manifold Assembly Insert**



Install Batteries by Removing Top Cover



Register Token Tag;  
Refer to **Token Tag Insert**



You'll Need:

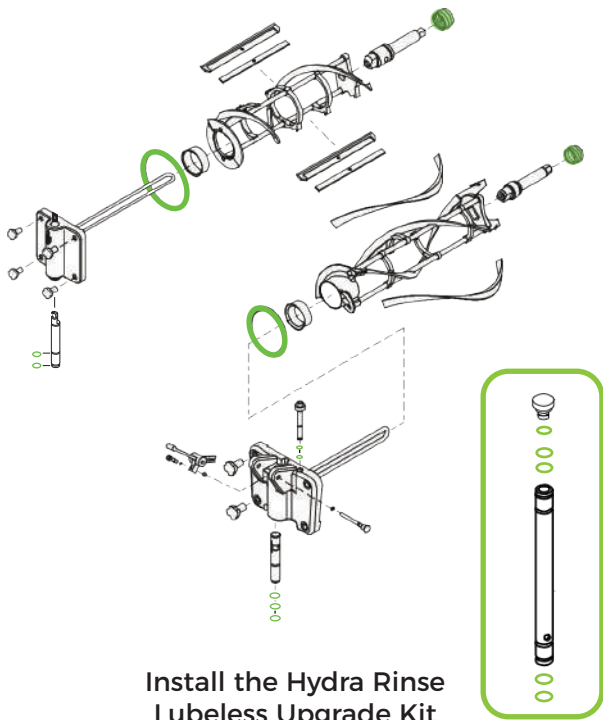
TAYHRPC707BK



HRLEXXCUPS72



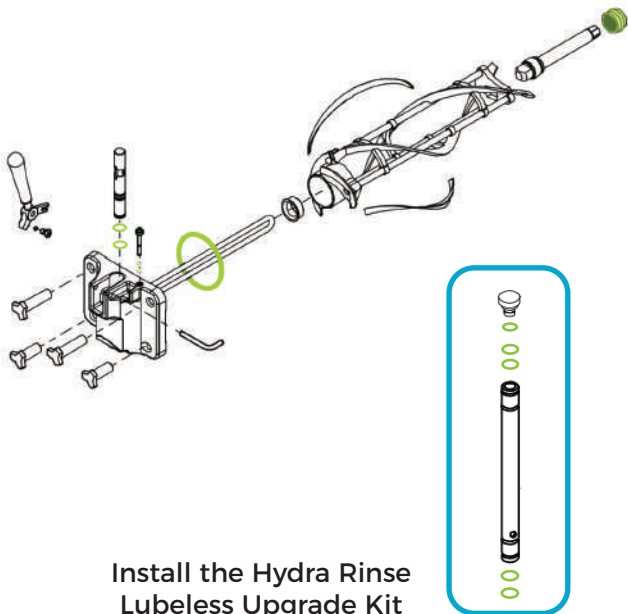
# Upgrade Ice Cream Machine



Install the Hydra Rinse  
Lubeless Upgrade Kit

# Upgrade Ice Cream Machine

Replace Freezer Door and Draw Valve,  
regardless of age or condition of existing door



Install the Hydra Rinse  
Lubeless Upgrade Kit

You'll Need:

TAYHRUK707BK



# Watch Training Videos

Hydra Rinse has two cleaning procedures, one for cleaning without fully disassembling the machine; also referred to as STAGE 1. The other procedure requires disassembly every 15 days. Please refer to the laminated process chart to learn how to perform the 15 day clean.

**Taylor 632  
Stage 1  
Training Video**



**Taylor 707  
Stage 1  
Training Video**



---

You'll Need:  
Internet Access





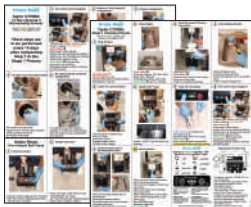
# Post-Training Job Aids

Hang signage on or near the soft-serve machine for quick and easy reference

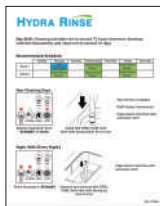
## Taylor 632 Process Chart



## Taylor 707 Process Chart



## Job Aid



# Usage Tips and Tricks

## Taylor 632

Cleaning time should not exceed **35 minutes** from start to finish.

## Taylor 707

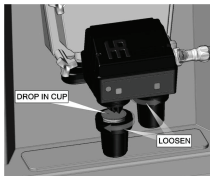
Cleaning time should not exceed **20 minutes** from start to finish.



When performing process, refer to video and posted Job Aids for optimum efficiency.



Eliminate NIGHT Shift cleaning work; place machine in **STANDBY**. Refer to posted Job Aid.



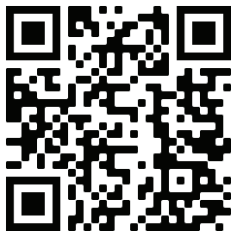
When inserting LEXX chemical pods, only remove one cup housing at a time to avoid confusion. Rotate cup housing and keep in position for easier reattachment.

# Register for Warranty

Get the most out of your purchase by registering your warranty. Get access to exclusive deals and news from your friends at Idea Boxx, Hydra Rinse and ProNatural Brands.



**Warranty Form**



**[www.hydrarinse.com/warranty](http://www.hydrarinse.com/warranty)**

---

You'll Need:

Internet Access



**HYDRA RINSE**<sup>®</sup>  
CLEANS SIMPLE. SAFE. QUICK.

102-1140.C