

**HYDRA RINSE**  
**Taylor 632:**  
**Stage 1 Cleaning Process**  
(R) = Right Side (L) = Left Side  
Words in **GREEN** signifies "ON"  
Words in **RED** signifies "OFF"

**1 Drain Product**



- (R/L) **Standby Mode**
- (R/L) **Mix Refrigeration**
- (R) Remove feed tube & empty product
- Refrigerate or discard

**7 Install Pro-control**



- (R)
- Clean bottom of freezer door
  - Wet all O-rings & Install Pro-control
  - Engage keeper switch
  - Connect water supply
  - Install 1 LEXX™ cup into each cup housing

**13 Install Pro-control**



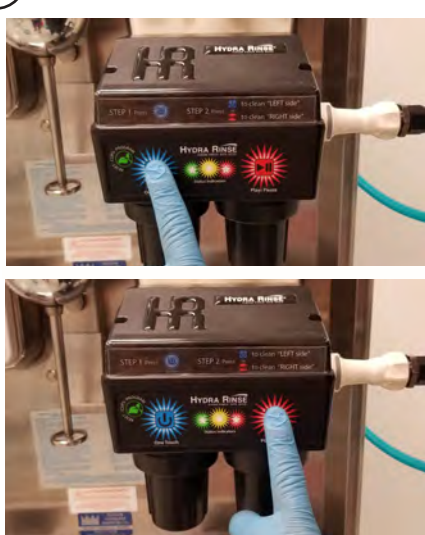
- (L)
- Clean bottom of freezer door
  - Wet all O-rings & Install Pro-control
  - Engage keeper switch
  - Connect water supply
  - Install 1 LEXX™ cup into each cup housing

**2 Clean Hopper**



- (R)
- Clean top hopper, lid & feed tube
  - Brush mix inlet hole
  - Fill freezing cylinder with wand
  - **Wash Mode**

**8 Start the Pro-control**



- (R)
- **"ONE TOUCH"** to initialize Pro-control
  - Pro-control will beep
  - **"PLAY/PAUSE"** to choose "Right Side"
  - Audible beeps from Pro-control
  - **Wash Mode**

**14 Start the Pro-control**



- (L)
- **"ONE TOUCH"** to initialize Pro-control
  - Pro-control will beep
  - **"ONE TOUCH"** to choose "Left Side"
  - Audible beeps from Pro-control
  - **Wash Mode**

**3 Drain Product**



- While (R) prewashing, remove (L) feed tube & empty product
- Refrigerate or discard

**9 Drain Prewash & Remove Draw Valve**



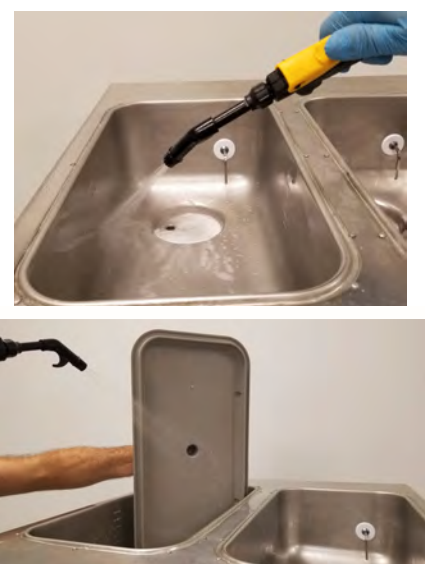
- (L)
- **Wash Mode**
  - Drain prewash
  - Remove draw valve
  - Spray openings of door
  - (L/R) Clean all removed components using two containers

**15 Pro-control Cycle Complete**



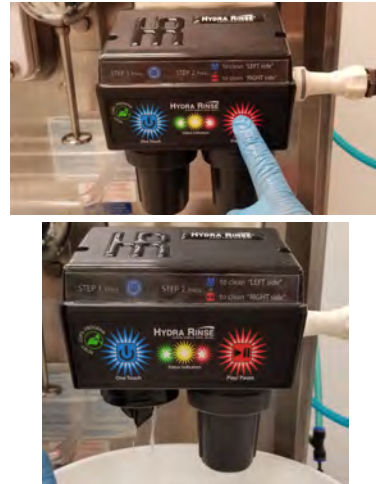
- (L)
- "GREEN LED" blinks, cycle is done
  - Press & release **"PLAY/PAUSE"**
  - **Wash Mode**
  - Disconnect water supply
  - Empty (R) cup housing & replace
  - Remove (L) cup housing & drain
  - Remove bypass tube to drain
  - Re-attach cup housing

**4 Clean Hopper**



- (L)
- Clean top hopper, lid & feed tube
  - Brush mix inlet hole
  - Fill freezing cylinder with wand
  - **Wash Mode**

**10 Pro-control Cycle Complete**



- (R)
- "GREEN LED" blinks, cycle is done
  - Press & release **"PLAY/PAUSE"**
  - **Wash Mode**
  - Disconnect water supply
  - Empty (R) cup housing & replace
  - Remove (L) cup housing & drain
  - Raise prime plug to drain
  - Re-attach cup housing

**16 Sanitize Freezer Door**



- **If performing 15 Day Clean, flip to back**
- Sanitize the (R) freezer door
- Remove & clean prime plug O-rings
- Re-install prime plug and draw valve

**5 Drain Prewash & Remove Draw Valve**



- (R)
- **Wash Mode**
  - Drain prewash
  - Remove draw valve & prime plug
  - Spray openings of door
  - Clean & re-install prime plug

**11 Install Bypass System**



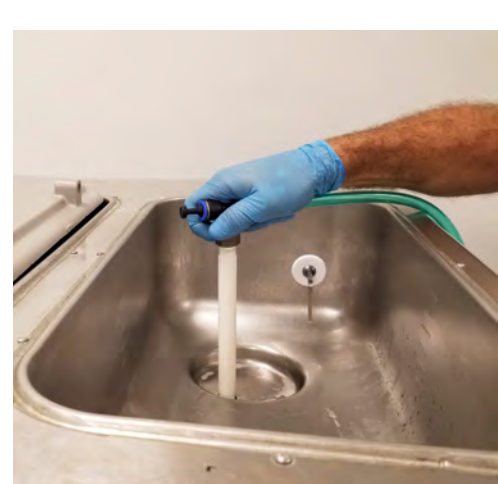
- Disengage keeper switch & remove the Pro-control
- Move bypass assembly from (R) mix inlet hole to (L) mix inlet hole

**17 Sanitize Freezer Door**



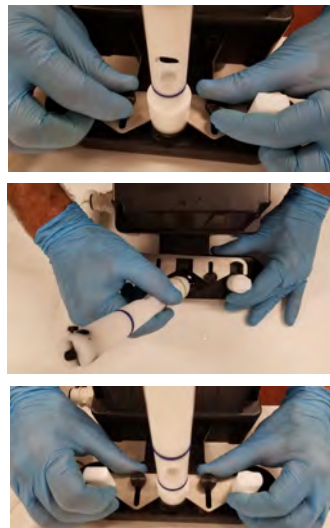
- Remove the Pro-control
- Sanitize the (L) freezer door
- Reinstall the draw valve
- Perform self-clean on Pro-control

**6 Install Bypass System**



- (R)
- Spray off bypass tube
  - Insert into mix inlet hole
  - Terminate bypass hose to a suitable drain
  - Replace hopper lid

**12 Change Manifold Pistons**



- Loosen bracket thumb screws and slide rearward
- Remove right side center piston
- Install left side center piston
- Slide bracket into place and tighten thumb screws

**HYDRA RINSE**

Words in **GREEN** signifies "ON"  
Words in **RED** signifies "OFF"

- |  |           |  |           |
|--|-----------|--|-----------|
|  | = OFF     |  | = MIX REF |
|  | = ON      |  | = STANDBY |
|  | = MIX LOW |  | = WASH    |
|  | = MIX OUT |  | = AUTO    |

STEP 1. Press STEP 2. Press to clean "LEFT side" or to clean "RIGHT side"



- |                                                                                                                                                                                                         |                                                                                                                                                                                                                                             |
|---------------------------------------------------------------------------------------------------------------------------------------------------------------------------------------------------------|---------------------------------------------------------------------------------------------------------------------------------------------------------------------------------------------------------------------------------------------|
| <b>1. "Reset-Cups-Program"</b> <ul style="list-style-type: none"><li>- Reset</li><li>- Register Cleaning Cycles</li><li>- Read # of Cleanings Available</li></ul>                                       | <b>3. "Status Indicators" LEDs</b> <ul style="list-style-type: none"><li>- Power On/Cycle Initiated</li><li>- Cycle Paused</li><li>- Errors</li><li>- # of Registered Cleanings</li></ul>                                                   |
| <b>2. "ONE TOUCH"</b> <ul style="list-style-type: none"><li>- Initialize Pro-control</li><li>- Selects "Left Side" leaning</li><li>- Self-Clean Mode when used simultaneously w/ "PLAY/PAUSE"</li></ul> | <b>4. "PLAY/PAUSE"</b> <ul style="list-style-type: none"><li>- Selects "Right Side" Cleaning</li><li>- Cancel/Conclude Cleaning</li><li>- Pause/Resume Cleaning</li><li>- Self-Clean Mode when used Simultaneously w/ "ONE TOUCH"</li></ul> |
- \*Refer to the Manual for Full Instructions\***



Taylor 632:  
15 Day Cleaning & Disassembly Process

Words in **GREEN** signifies "ON"  
Words in **RED** signifies "OFF"

These steps are  
to be performed  
every 15 days  
after completing  
the Step 15 in the  
Stage 1 Process

RIGHT SIDE

1 Remove & Clean Internal Components



- **Main Power** ○
- Remove the freezer door & all internal components
- Clean the cylinder & all components using the wand, wipes & brushes
- Brush clean all door openings

2 Inspect Components



- Inspect front bearing and scraper blades for wear
- Replace if necessary

3 Re-lube & Re-install Drive Shaft



- Re-install rear shaft seal
- Apply lube to smooth part of drive shaft, avoiding hex end
- Re-install drive shaft

4 Re-assemble Machine



- Re-install all internal components, freezer door and draw valve
- **Main Power** ○

5 Re-sanitize Cylinder and Internal Components



- Fill freezing cylinder with wand
- **Wash Mode** 🔄 wait 2-3 minutes
- **Wash Mode** 🔄
- Drain sanitizing solution
- Prime & fill with new mix
- Re-install feed tube
- **Auto Mode** ⚙️

LEFT SIDE

6 Remove & Clean Internal Components



- Remove the freezer door & all internal components
- Clean the cylinder & all components using the wand, wipes & brushes
- Brush clean all door openings

7 Inspect Components



- Inspect front bearing and scraper blades for wear
- Replace if necessary

8 Re-lube & Re-install Drive Shaft



- Re-install rear shaft seal
- Apply lube to smooth part of drive shaft, avoiding hex end
- Re-install drive shaft

9 Re-assemble Machine



- Re-install all internal components, freezer door and draw valve
- **Main Power** ○

10 Re-sanitize Cylinder and Internal Components



- Fill freezing cylinder with wand
- **Wash Mode** 🔄 wait 2-3 minutes
- **Wash Mode** 🔄
- Drain sanitizing solution
- Prime & fill with new mix
- Re-install feed tube
- **Auto Mode** ⚙️
- 15 Day Clean is now complete
- Perform Self-Clean on Pro-Control

Hydra Rinse:  
Pro-Control Self Clean

1 Prep Pro-Control



- Connect water supply to Pro-Control
- Hold Pro-Control upside down with Pistons over a bucket

2 Initiate Self Clean



- Press and hold "ONE TOUCH" and "PLAY/PAUSE" for ~5secs
- All 3 led's illuminate, release buttons
- Flush cycle is approx. 30secs

3 Empty Pro-Control



- LED's will turn off, cycle is complete
- Disconnect water supply
- Empty cup housings