

HYDRA RINSE Crown Pump Series: Stage 1 Cleaning Process

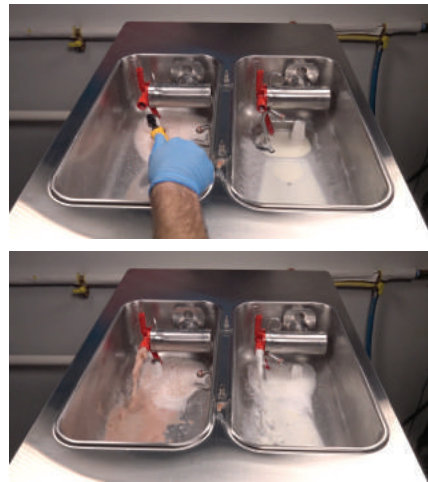
Words in **GREEN** signifies "ON"
Words in **RED** signifies "OFF"

1 Drain Product



- **Standby Mode** : wait 4-5 hours
- **Standby Mode** : Relieve pressure
- Remove feed tube(s)
- **Wash Mode**
- Drain product & refrigerate or discard

2 Optional Pre-wash Pump Assemblie(s)



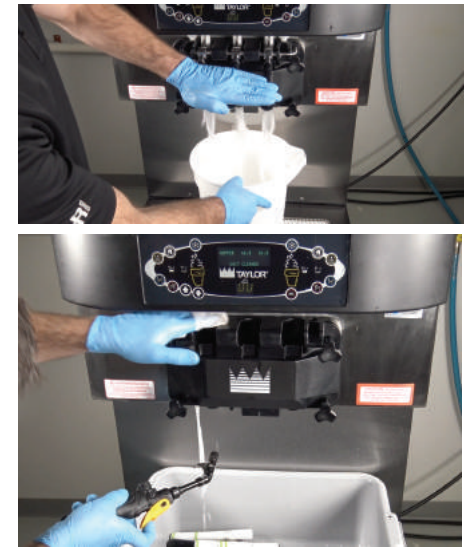
- **Wash Mode**
- Re-insert feed tube(s)
- Fill hopper with 1" LEXX™ solution
- **Pumps** 30 secs
- **Pumps**
- Remove feed tube(s) & let solution drain into barrel(s)

3 Clean Hopper(s)



- Remove pump assemblie(s) & drive shaft(s)
- Clean top hopper(s), lid(s) & feed tube(s)
- Brush mix inlet hole(s)
- Fill freezer barrel(s) with wand
- **Wash Mode** wait 2-3 minutes

4 Drain Pre-wash & Remove Draw Valve(s)



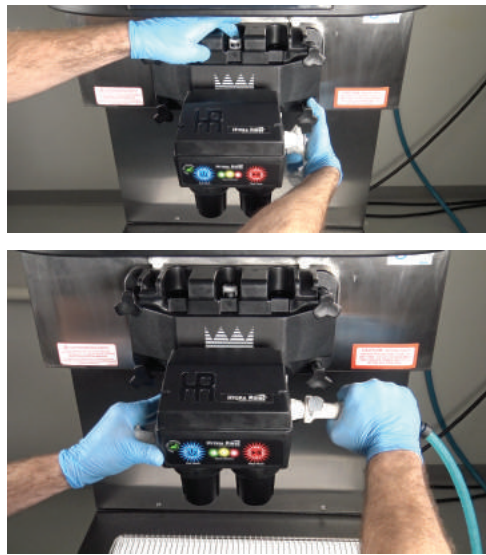
- Drain pre-wash
- **Wash Mode**
- Remove draw valve(s) & prime plug(s)
- Spray each opening
- Clean & re-install prime plug(s)

5 Install Bypass System



- Spray off bypass tube(s)
- Insert into mix inlet hole(s)
- Terminate bypass hose to a suitable drain
- Replace hopper lid(s)

6 Install Pro-control Module



- Clean bottom of freezer door
- Wet all O-rings
- Install Pro-control
- Engage keeper switch
- Connect water supply

7 Install LEXX™ Cups



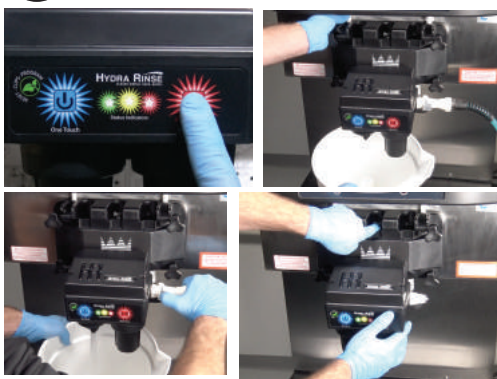
- Install 1 LEXX™ cup into each cup housing

8 Start the Pro-control



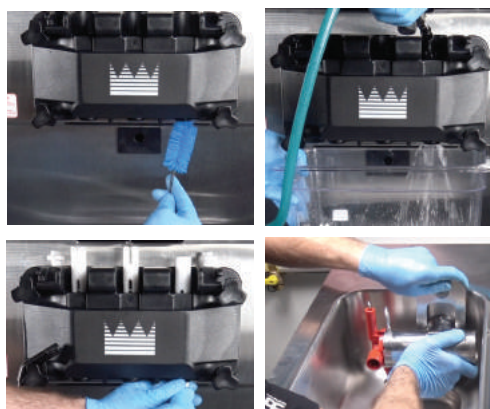
- **"ONE TOUCH"** to initialize the Pro-control cycle
- Audible beeps from Pro-control
- **Wash Mode**
- Clean any removed components
- **If performing Stage 2, flip to back**

9 Pro-control Cycle Complete



- "GREEN LED" blinks, cycle is done
- Press & release **"PLAY/PAUSE"**
- **Wash Mode**
- Disconnect water supply
- Remove left cup housing over bucket
- Raise prime plug(s)/remove bypass to drain
- **Wash Mode** momentarily
- Re-attach cup housing
- Disengage keeper switch & remove the Pro-control

10 Sanitize Freezer Door & Re-install Draw Valve(s)



- Clean prime plug(s), freezer door & all openings
- Disconnect bypass system
- Re-install draw valve(s), prime plug(s), pump drive shaft(s) & pump assemblie(s)
- Leave feed tube(s) out
- Perform self-clean on Pro-control

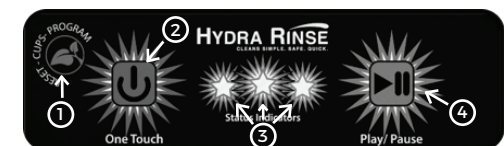
11 Prime Machine



- Open prime plug(s)
- Pour mix into hopper(s) & hold draw valve(s) open
- When only fresh mix is flowing, close draw valve(s)
- When mix flows from prime plug opening(s), close prime plug(s)
- When mix stops bubbling into barrel(s), re-install feed tube(s) & cotter pin(s)
- Replace hopper lid(s)
- **Auto Mode**

HYDRA RINSE Words in **GREEN** signifies "ON" Words in **RED** signifies "OFF"

- | | |
|-----------|-----------|
| = AUTO | = PUMP |
| = ON | = STANDBY |
| = OFF | = MIX LOW |
| = MIX REF | = MIX OUT |
| = WASH | |



- | | |
|---|--|
| 1. "Reset-Cups-Program"
- Reset
- Register Cleaning Cycles
- Read # of Cleanings Available | 3. "Status Indicators" LEDs
- Power On/Cycle Initiated
- Cycle Paused
- Errors
- # of Registered Cleanings |
| 2. "ONE TOUCH"
- Initialize Cleaning Cycles
- Self-Clean Mode when used simultaneously w/ "PLAY/PAUSE" | 4. "PLAY/PAUSE"
- Cancel/Conclude Cleaning
- Pause/Resume Cleaning
- Self-Clean Mode when used simultaneously w/ "ONE TOUCH" |

Refer to the Manual for Full Instructions

HYDRA RINSE

Crown Pump Series: Stage 2 Cleaning Process

Please refer to manual for full instructions

Words in **GREEN** signifies "ON"
Words in **RED** signifies "OFF"

1 Pause the Pro-control



- All 3 LED's start blinking about 3 ½ minutes into the cycle
- "PLAY/PAUSE"
- **Wash Mode**

5 Re-assemble Machine



- When all parts have been cleaned & sanitized:
- Re-assemble the machine
- Reapply the proper lubricant to all appropriate parts

2 Drain the Pro-control



- Disconnect water supply
- Remove left cup housing
- Raise prime plugs to drain

6 Re-install the Pro-control



- Re-install the Pro-Control & connect the water supply
- Check that the water is still turned on & the bypass is properly installed

3 Remove the Pro-control



- Re-install the left cup housing
- Remove the Pro-Control & set aside (do not push any additional buttons)
- Pro-Control will beep & green LED will blink while paused

7 Resume Stage 1 Cleaning



- "PLAY/PAUSE"
- **Main Power**
- **Wash Mode**
- The Pro-Control will now start its sanitizing cycle
- **Revert to step 9 to complete stage 1**

4 Remove & Clean Internal Components



- **Main Power**
- Remove the freezer door & all internal components
- Clean each cylinder & all components using the wand, wipes and brushes
- Brush clean all door openings