

Shake Machine Series: Stage 1 Cleaning Process

Words in **GREEN** signifies "ON"
Words in **RED** signifies "OFF"

1 Drain Product



- Remove top hopper lid(s)
- Remove feed tube(s)
- **Wash Mode**
- Drain product
- **Off**
- Refrigerate or discard

5 Install Pro-control Module



- Clean bottom of freezer door
- Wet all O-rings
- Install Pro-control
- Engage keeper switch
- Connect water supply

9 Drain Pro-Control



- Drain Pro-Control in a bucket to remove any excess solution

2 Clean Hopper(s)



- Clean top hopper(s) & lid(s)
- Brush mix inlet hole(s)
- Fill freezing cylinder(s) with wand
- **Wash Mode**

6 Install LEXX™ Cups



- Install 1 LEXX™ cup into each cup housing

10 Clean Freezer Door & Re-install Draw Valve(s)



- Clean bottom of freezer door & draw valve port(s)
- Leave apart or re-install the draw valve(s) & re-fill the machine within 72 hours
- Perform self-clean on Pro-control

3 Drain Pre-wash & Remove Draw Valve(s)



- Drain pre-wash
- **Off**
- Remove draw valve(s)

7 Start the Pro-control

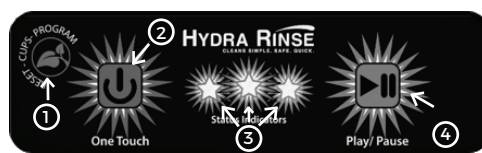


- "ONE TOUCH" to initialize the Pro-control cycle
- Audible beeps from Pro-control
- **Wash Mode**
- Clean any removed components
- **If performing 15 Day Clean, flip to back**

Words in **GREEN** signifies "ON" Words in **RED** signifies "OFF"



WASH • OFF • AUTO



- | | |
|--|--|
| <p>1. "Reset-Cups-Program"</p> <ul style="list-style-type: none"> - Reset - Register Cleaning Cycles - Read # of Cleanings Available | <p>3. "Status Indicators" LEDs</p> <ul style="list-style-type: none"> - Power On/Cycle Initiated - Cycle Paused - Errors - # of Registered Cleanings |
| <p>2. "ONE TOUCH"</p> <ul style="list-style-type: none"> - Initialize Cleaning Cycles - Conclude Cleaning Cycles - Self-Clean Mode when used Simultaneously w/ "PLAY/PAUSE" | <p>4. "PLAY/PAUSE"</p> <ul style="list-style-type: none"> - Cancel Cleaning - Pause/Resume Cleaning - Self-Clean Mode when used Simultaneously with "ONE TOUCH" |

Refer to the Manual for Full Instructions

4 Install Bypass System



- Spray off bypass tube(s)
- Insert into mix inlet hole(s)
- Terminate bypass hose to a suitable drain
- Replace hopper lid(s)

8 Pro-control Cycle Complete



- "GREEN LED" blinks, cycle is done
- **Off**
- Press & release "PLAY/PAUSE"
- Disconnect water supply
- Remove left cup housing over bucket
- Remove bypass to drain solution (momentarily **Wash Mode**)
- Re-attach cup housing
- Disengage keeper switch & remove the Pro-control

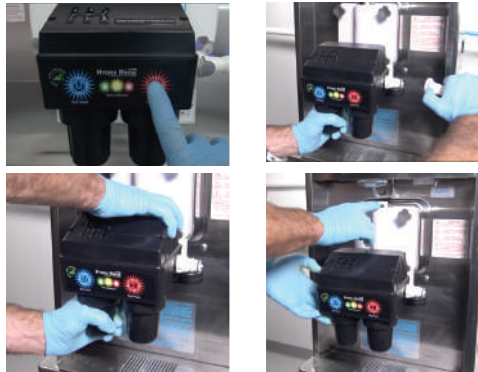
HYDRA RINSE

Shake Machine Series: 15 Day Cleaning & Disassembly Process

Words in **GREEN** signifies "ON"
Words in **RED** signifies "OFF"

These steps are to be performed every 15 days after completing the Step 7 in the Stage 1 Process

1 Pro-control Cycle Complete



- "GREEN LED" blinks, cycle is done
- **Off** ○
- Press & release "**PLAY/PAUSE**"
- Disconnect water supply
- Remove left cup housing over bucket
- Remove bypass to drain solution (momentarily **Wash Mode** 🚿)
- Re-attach cup housing
- Disengage keeper switch & remove the Pro-control

2 Drain Pro-Control



- Drain Pro-Control in a bucket to remove any excess water

3 Remove & Clean Internal Components



- Remove the freezer door & all internal components
- Clean the cylinder & all components using the wand, wipes & brushes
- Brush clean all door openings

4 Inspect Components



- Inspect front bearing and scraper blades for wear
- Replace if necessary

5 Re-lube & Re-install Drive Shaft



- Re-install rear shaft seal
- Apply lube to smooth part of drive shaft, avoiding hex end
- Re-install drive shaft

6 Re-assemble Machine



- Re-install all internal components, freezer door and draw valve

7 Re-sanitize Cylinder and Internal Components



- Fill freezing cylinder with wand
- **Wash Mode** 🚿 wait 2-3 minutes
- **Off** ○
- Drain sanitizing solution
- Prime and fill with new mix, re-install feed tube
- **Auto Mode** ❄️
- 15 Day Clean is now complete
- Perform Self-Clean on Pro-Control

Hydra Rinse: Pro-Control Self Clean

1 Prep Pro-Control



- Connect water supply to Pro-Control
- Hold Pro-Control upside down with Pistons over a bucket

2 Initiate Self Clean



- Press and hold "ONE TOUCH" and "PLAY/PAUSE" for ~5secs
- All 3 led's illuminate, release buttons
- Flush cycle is approx. 30secs

3 Empty Pro-Control



- LED's will turn off, cycle is complete
- Disconnect water supply
- Empty cup housings