

EF Pressure Fed: Stage 1 Cleaning Process

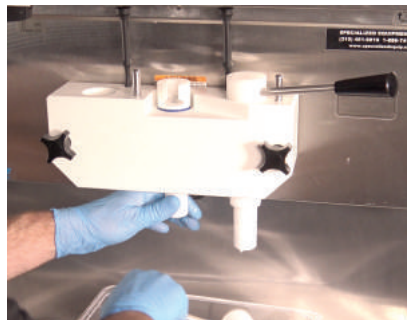
Words in **GREEN** signifies "ON"
Words in **RED** signifies "OFF"

1 Drain Product



- **Night Mode**
- Disconnect product mix bag(s)
- Fill a catch bucket with LEXX™
- Put air curtain in place
- Drain product and discard

5 Remove Spigot(s)



- Install the drain line to a suitable drain
- Remove spigot(s) and bleeder assembly(ies) from head assembly
- Spray all openings
- Clean bleeder assembly(ies) and replace

9 Pro-control Cycle Complete



- "GREEN LED" blinks, cycle is complete
- Press & release **"PLAY/PAUSE"**
- **Clean Mode**
- Disconnect water supply

2 Pre-wash the Freezing Cylinder(s)



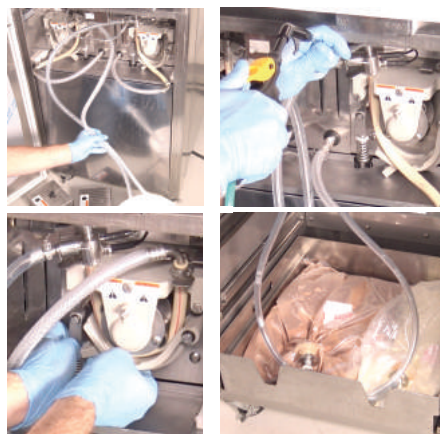
- Place mix-in bag adapter(s) in solution and raise bleeder(s)
- Fill freezing cylinder(s) with solution
- When full, **Pump(s)** & **Clean Mode**

6 Install Pro-control



- Clean bottom of freezer door
- Wet all O-rings on Pro-control
- Install Pro-control
- Engage keeper switch to secure
- Connect water supply

10 Remove Bypass Assembly



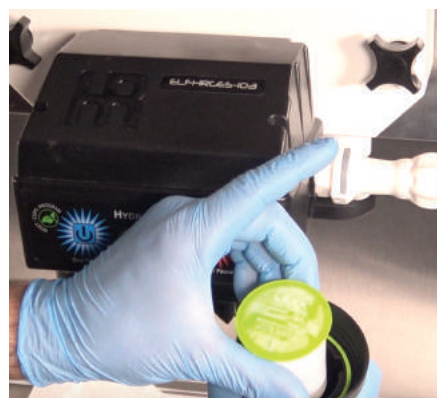
- Disconnect mix inlet tube(s) from bypass & place into a bucket
- Raise bleeder assembly(ies) to drain
- When empty, unplug air tube(s) & clean
- Reinstall air meter(s) & mix-in bag adapter(s)
- Reassemble MTS assembly, stow air curtain
- Clean lower cabinet, if needed

3 Drain Pre-wash, Plug Air Tube(s)



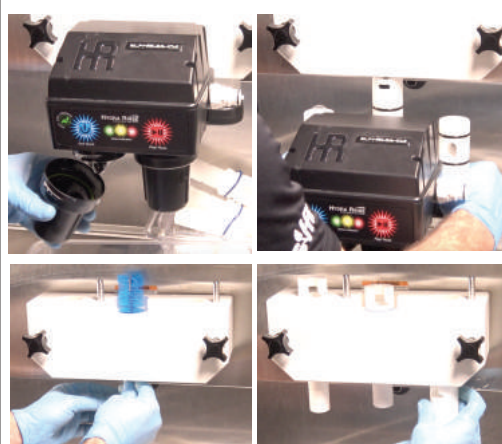
- After 2-3 mins, **Clean Mode**
- Drain freezing cylinder(s)
- Remove mix-in bag adapter(s) & air meter(s)
- Spray air tube(s) with wand and plug them using a spigot rod

7 Install LEXX™ Cups



- Install 1 LEXX™ cup into each cup housing

11 Remove Pro-control & Re-install Components



- Empty cup housings & remove the Pro-control
- Remove bleeder assembly(ies) & clean openings
- Re-install the spigots & bleeder assembly(ies)
- Re-fill machine with product
- Run self clean on Pro-control

4 Prep Lower Cabinet & Connect Bypass Assembly



- Remove MTS cover(s)
- Loosen swing arm clamp
- Remove outlet side of transfer hose from MTS assembly
- Connect mix inlet tube(s) to bypass assembly

8 Start the Pro-control & Clean Ancillary Components



- Open bleeder assembly(ies)
- **"ONE TOUCH"** to initiate the Pro-control cycle
- When solution flows from bleeder opening or the Pro-control beeps, close bleeder(s)
- **Clean Mode**
- Clean and sanitize all removed parts
- **If performing Stage 2, flip to back**



- "Reset-Cups-Program"**
 - Reset
 - Register Cleaning Cycles
 - Read # of Cleanings Available
- "ONE TOUCH"**
 - Initialize Cleaning Cycles
 - Self-Clean Mode when used simultaneously w/ "PLAY/PAUSE"
- "Status Indicators" LEDs**
 - Power On/Cycle Initiated
 - Cycle Paused
 - Errors
 - # of Registered Cleanings
- "PLAY/PAUSE"**
 - Cancel/Conclude Cleaning
 - Pause/Resume Cleaning
 - Self-Clean Mode when used simultaneously w/ "ONE TOUCH"

Refer to the Manual for Full Instructions

HYDRA RINSE

EF Pressure Fed: Stage 2 Cleaning Process

1 Pause the Pro-control



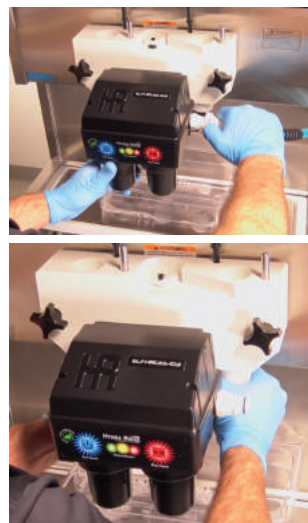
- All 3 LED's start blinking about 3 1/2 minutes into the cycle
- **"Play/Pause"**
- **Clean Mode**

2 Drain the Machine



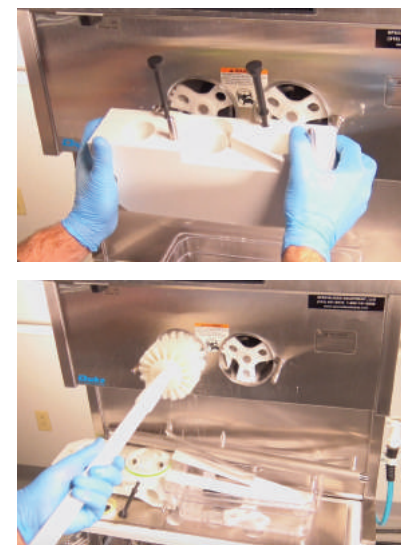
- Disconnect mix inlet tube(s) from bypass & place into a bucket
- Raise bleeder assembly(ies) to drain
- **Main Power**

3 Remove the Pro-control



- Disconnect water supply
- Empty left cup housing
- Remove Pro-control & set aside (do not push any additional buttons)
- Pro-Control will beep & green LED will blink while paused

4 Remove & Clean Internal Components



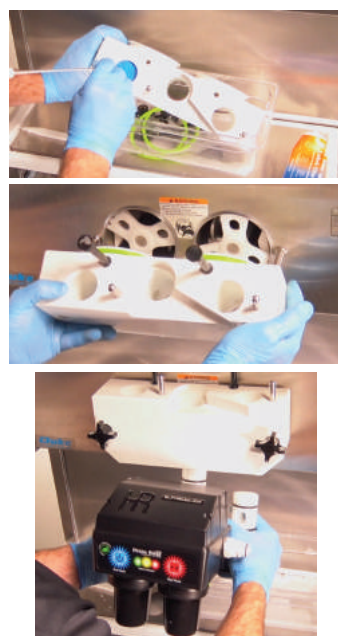
- Remove head assembly
- Remove internal components, one cylinder at a time
- Clean components using the wand, wipes and brushes

5 Re-assemble the Machine



- When all parts have been cleaned & sanitized:
- Re-assemble the machine
- Reapply the proper lubricant to all appropriate parts

6 Re-install Pro-control



- Brush clean head assembly
- Re-install head assembly
- Re-install the Pro-control

7 Clean Lower Cabinet



- One side at a time, disassemble the MTS assembly
- Brush clean all fittings
- Brush clean the mix feed tube(s)

8 Re-assemble Lower Cabinet



- Reassemble the MTS assembly(ies)
- Replug the air tube(s)
- Reconnect the mix inlet tube(s) to the bypass
- Leave transfer hoses out of roller assembly for sanitizing process

9 Re-connect Water Supply



- Reconnect the water supply
- **Main Power**
- Open bleeder assembly(ies)

10 Resume Stage 1 Cleaning



- **"Play/Pause"** to resume the cycle
- When solution flows from bleeder(s), close bleeder(s)
- **Clean Mode**
- The Pro-Control will now start its sanitizing cycle
- **Revert to Stage 1 Step 9 to complete**