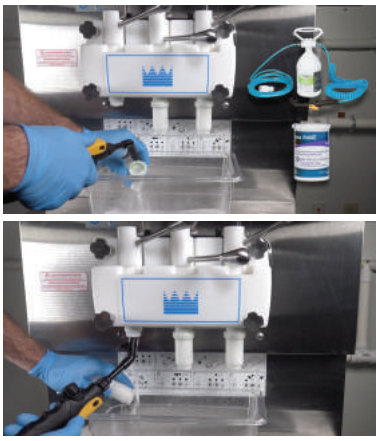


Taylor 875XDQ: Stage 1 Cleaning Process

1 Standby, Clean Draw Valves & Extensions



- **Standby Mode** ❄️
- Wait 4-5 Hours
- Prep utility items
- Clean under freezer door, draw valves & extensions

2 Drain Product, Ready for Cleaning



- **Standby Mode** ❄️
- **Mix Refrigeration Control** ⚡
- Remove product mix bags & refrigerate
- Fill front side of a bucket w/ LEXX™
- Drain product mix & discard
- **Pump(s)** & **Wash Mode**, until empty
- **Pump(s)** & **Wash Mode** 🚰 🧼

3 Pre-rinse Freezer Barrels



- Spray off and place mix-in bag adaptors in solution
- **Pump(s)** 🚰
- Fill freezer barrel(s) until discharge from the prime plug(s) occurs
- Close prime plug(s)
- **Wash Mode** 🧼
- Keep filling bucket

4 Drain Pre-wash, Remove Draw Valves



- **Pump(s)** 🚰
- Agitate for 2 minutes
- Drain pre-wash solution
- **Wash Mode** 🧼
- Remove draw valves, extensions & prime plugs
- Spray through ports, rinse & re-install prime plug(s)

5 Install Pro-control Module



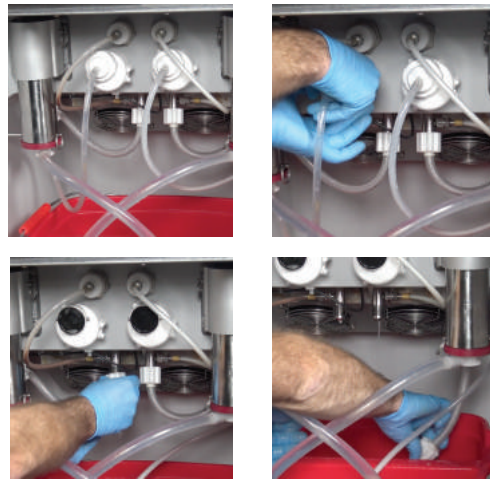
- Clean bottom of freezer door
- Wet all O-rings on Pro-control
- Install Pro-control
- Engage keeper switch to secure
- Connect water supply

6 Install LEXX™ Cups



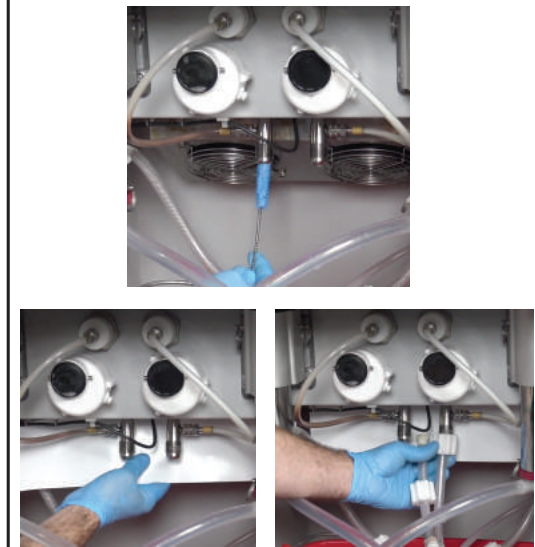
- Install 1 LEXX™ cup into each cup housing

7 Prep Lower Cabinet



- Place mix level quick connectors into the LEXX™ solution
- Remove mix flare lines to discharge into bucket

8 Install Bypass System



- Brush each mix inlet stub
- Install magnetic shield
- Install bypass system to mix inlet stubs

9 Configure Pressure Sensor Lines



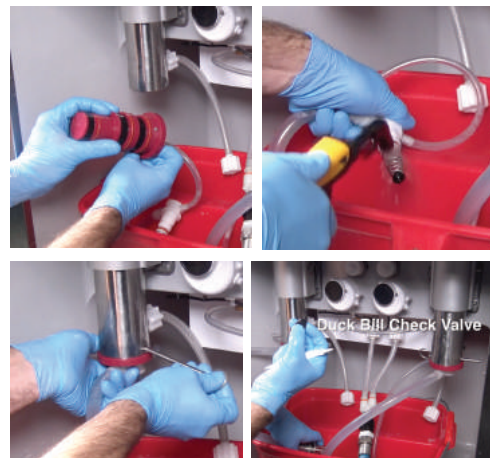
- Remove right pressure sensor line for manual cleaning
- Disconnect left pressure sensor line and connect it to the right mix inlet stub, as shown
- Terminate bypass hose to a suitable drain

10 Start the Pro-control Cycle



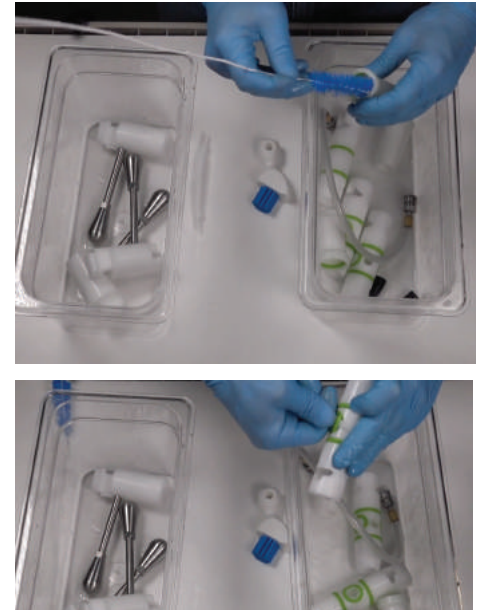
- **"ONE TOUCH"** to initialize the Pro-control cycle
- Audible beeps from Pro-control
- **Pump(s)** 🚰
- **Wash Mode** 🧼
- Flush product mix delivery system until solution bay is empty
- **Pump(s)** 🚰
- **If performing Stage 2, flip to back**

11 Clean Pump and Check Valves



- Remove the pump body valve, mix inlet elbow, black rubber poppet and spring for a thorough rinsing with the wand only
- Re-assemble
- Remove duck bill check valve
- Empty & rinse 2 bay bucket
- Repeat process on other side

12 Clean Ancillary Components



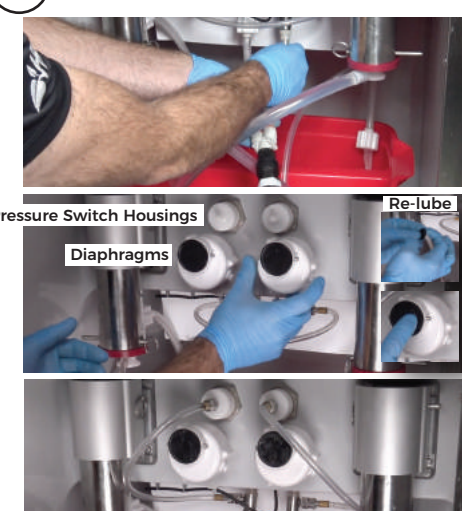
- Clean & sanitize all removed components
- Be sure to remove all O-rings

13 Pro-control Cycle Complete



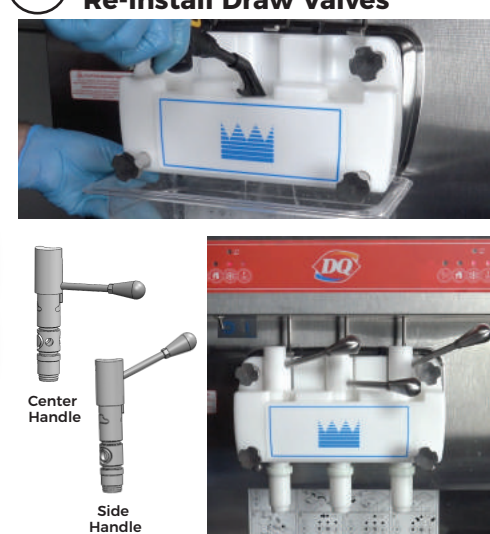
- **"GREEN LED"** blinks, cycle is done
- **Wash Mode** 🧼
- Press & release **"PLAY/PAUSE"**
- Remove left cup housing over bucket; lift prime plug, drain solution (briefly **Wash Mode** 🧼)
- Re-attach cup housing
- Place bucket in lower cabinet
- Place product mix flare line(s) in the empty bay of the bucket
- Disconnect water supply, slide keeper switch to the middle & remove the Pro-control

14 Sanitize Mix Delivery System



- **Pump(s)** 🚰
- Flush drained LEXX™ solution through the lower product mix delivery system, **Pump(s)** 🚰
- Disconnect the bypass system
- Clean & re-lube all diaphragms
- Re-install check valves

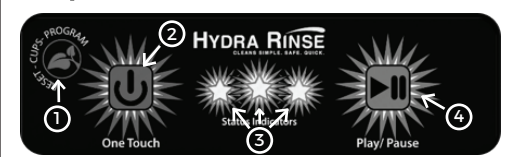
15 Sanitize Freezer Door, Re-install Draw Valves



- Clean then re-install prime plug(s), draw valves & extensions
- You can now fill the machine with product within 72 hours
- Perform self-clean on Pro-control

HYDRA RINSE Words in GREEN signifies "ON" Words in RED signifies "OFF"

- | | |
|-------------|--------------|
| ❄️ = AUTO | 🚰 = PUMP |
| I = ON | ❄️ = STANDBY |
| ○ = OFF | 🚰 = MIX LOW |
| ⚡ = MIX REF | 🚰 = MIX OUT |
| 🧼 = WASH | |



- "Reset-Cups-Program"**
 - Reset
 - Register Cleaning Cycles
 - Read # of Cleanings Available
- "ONE TOUCH"**
 - Initialize Cleaning Cycles
 - Self-Clean Mode when used simultaneously w/ "PLAY/PAUSE"
- "Status Indicators" LEDs**
 - Power On/Cycle Initiated
 - Cycle Paused
 - Errors
 - # of Registered Cleanings
- "PLAY/PAUSE"**
 - Cancel/Conclude Cleaning
 - Pause/Resume Cleaning
 - Self-Clean Mode when used simultaneously with "ONE TOUCH"

Refer to the Manual for Full Instructions

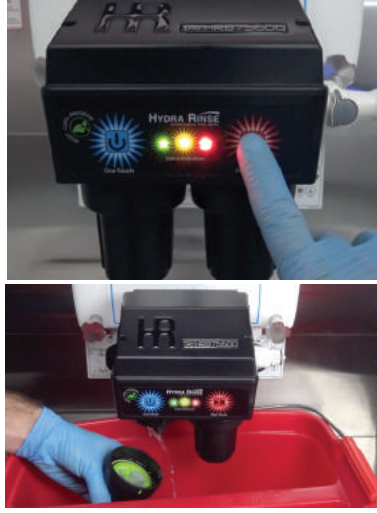
Taylor 875XDQ: Stage 2 Cleaning Process

1 Clean Mix Delivery System



- Disassemble & clean delivery system
- Re-lubricate the pump cylinder & re-assemble

2 Pause & Drain the Machine



- All 3 LED's start blinking about 3 ½ minutes into the cycle
- "Play/Pause" & Wash Mode
- Disconnect water supply
- Remove left cup housing over bucket; lift prime plug to drain
- Replace cup housing

3 Remove Pro-control & Door



- Remove the Pro-Control & set aside (do not push any additional buttons)
- Pro-Control will beep & green LED will blink while paused
- Remove freezer door

4 Remove & Clean Internal Components



- Remove internal components
- Clean removed components with wand, wipes & brushes
- Remove lube from beater shaft & seal

5 Re-lube & Re-install Components



- Re-install rear shaft seal
- Apply lube to smooth part of drive shaft, avoiding hex end
- Re-install remaining components

6 Clean & Re-install Freezer Door



- When all parts have been cleaned & sanitized:
- Clean the freezer door using the wand and OEM brushes
- Re-install prime plugs
- Re-install freezer door

7 Re-install Pro-control



- Re-install the Pro-Control & connect the water supply
- "Play/Pause" to resume the cycle

8 Resume Stage 1 Cleaning



- Wash Mode
- The Pro-Control will now start its sanitizing cycle
- Finish cleaning & re-assembling the mix delivery system
- Return to Stage 1 Step 12 to complete