

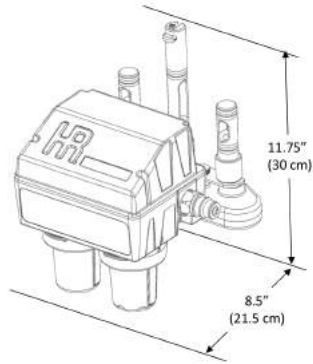


Pro-control

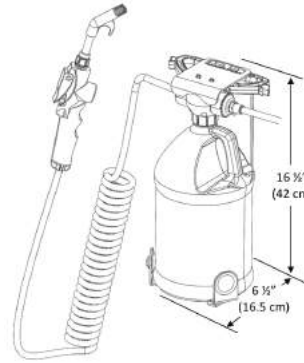
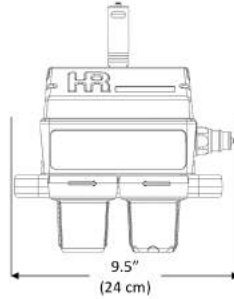


Portable Wandstation

Size and Weight



3.6 lbs (1.63 kg)



10 lbs (4.54 kg)

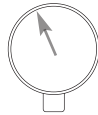


Water Supply Temperature¹

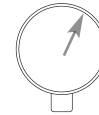


110°F - 120°F (44°C - 49°C)

Minimum Supply Pressure (Static)



40 PSI (275 kPa)



50 PSI (345 kPa)

Minimum Supply Flow Rate²

4.0 US Gal/min (15 L/min)

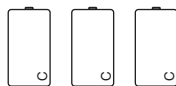
.5 US Gal/min (3 L/min)

Dispense Flow Rate

0.5 - 4.0 US Gal/min (1.89 - 15 L/min)

0.25 US Gal/min (0.95 L/min)

Power



3 C-Type Alkaline Batteries

N/A

Handling

Splash and Dust Resistant

Storage/Mounting

Dry storage shelf (Approx. 1.5 sqft)
Store between 60° - 110°F (15.5° - 43°C)

Wall Mounted
2 - #8 Screws w/ anchors
Store between 60° - 110°F (15.5° - 43°C)

In the Box

- Pro-control
- Supply and Drain Extension
- Model Specific Manifold Assembly
- Model Specific Upgrade Kit
- Model Specific Bypass System
- Hose Splitter
- Documentation

- Portable Wandstation
- 30' Coiled Hose with Spray Handle
- 25' Supply Hose
- Mounting Bracket
- Mounting Latch
- LEXX Test Strips (ph)
- Documentation

1. A Hot Water Temperature Control Valve is recommended to be installed to provide tempered water to Hydra Rinse supply piping along with a backflow prevention device in accordance with local, state and federal guidelines. **An atmospheric vented backflow prevention device is required for use in the State of California.**

2. Minimum Flow Rate for combined use of both Hydra Rinse Delivery Devices simultaneously is 4 GPM @ 50PSI

* Refer to Operator's Manual for more information

** Specification(s) subject to change without notice, final product specifications may vary slightly.